

**April 2024 SPECIALS**  
**BEi® Supply & Rental, Inc.**  
Commercial & Industrial Supplies  
Rental & Hardware  
[www.beisupply.com](http://www.beisupply.com)



**Phone (330) 467-2201**



**June 19, 2024**  
**Customer**  
**Appreciation Day!**

Warm weather is upon us and so are outdoor projects! We have what it takes to get your machines in working order for the season. All the grass seed and top soil for your lawn. Shovels, rakes, cleaners and anything else you need! We also have a rental fleet that has the machines to get the job done right. Stop on out today and see what BEi has to help you this Spring!



## New Rental Equipment!

**TAKEUCHI**

**WE HAVE TRACKS!**



The Takeuchi TL8R2 tracked loader is a 9,200 lb. beast of a machine that has a 3000lb lift capacity at 50%. This is a High flow track loader. It has an impressive 6200lb bucket breakout force. Stop in and reserve our new skidsteer today!

**\$375** per Day  
**\$1500** per Week

The Toro Mini Track Soil Cultivator is the ultimate attachment for soil preparation! Used to cultivate and level soil. This attachment will also bury debris such as stones, soil clods and grass. transforms rough terrain into a perfect planting bed in one pass.

**TORO**



**\$165** per Day  
**\$690** per Week

## WHAT'S NEW

**COMING SOON!**



The Next Gen 18" Hydro-Drive Sod Cutter is easy to operate and comfortable to use with variable ground speeds, forward & reverse and intuitive controls. Single lever and clamp at user's operating position adjusts simply, saving time and providing precise cutting depths.

**\$90** per Day  
**\$360** per Week

The 242H EPIC® Series hand-held Hole Digger features an all position, 4-stroke engine. The unique, ergonomically engineered Power-GRIP® operator handle helps maximize control. Performance to dig up to an 8.0 inch diameter hole in a variety of soil classifications.

**\$70** per Day  
**\$280** per Week

**General**  
EQUIPMENT COMPANY



# The Best Source for Maintenance Supplies... BEi®

## Scotts Grass Seed

**\$17.99**  
3 lb.  
**\$38.99**  
7 lb.

Scotts Classic Grass Seed Sun & Shade Mix is Scotts most versatile mix. Germination time for 5 - 10 days. Available in a 3 or 7 pound bag.



(7305097, 7305105)



(7167422)

Improved Scotts Patch Master Lawn Repair Mix Tall Fescue Mix has everything you need to repair bare spots in your lawn. 4.75 pound bag.

**\$13.99**  
4.75 lb.

Scotts PatchMaster Lawn Repair Mix Sun + Shade Mix Starts to grow in as few as 7 days. Fill bare spots. Available in 4.75 or 10 pound bags.



(7166770, 7694151)

**\$13.99**  
4.75 lb.  
**\$22.99**  
10 lb.

## Ace Garden Shovels



Premium Hardwood Handle  
Tempered Steel Blade



**D-Handle  
Round Point  
\$24.99**

Square point. Steel and wood D-handle is strong and durable. (70013)



**D-Handle  
Round Point  
\$24.99**

Round point. Steel and wood D-handle is strong and durable. (70016)



**Short Handle  
Round Point  
\$20.99**

Square point. 47" handle. Steel collar reinforces head to handle connection. (70024)



**Short Handle  
Round Point  
\$20.99**

Round point. 47" handle. Steel collar reinforces head to handle connection. (70018)

## Fiskars Garden Tools

**FISKARS®**



(7499569)

Our small softgrip pruner glides through stems and small branches and is rust-resistant.

**\$16.99**



(7365869)

13 in. Steel serrated hedge shears with blades that grip branches and are self sharpening.

**\$23.99**



(7131386)

Shear ease grass shears for trimming back grass around garden beds and along fence lines.

**\$19.99**



(7508419)

Cut high branches without a ladder with a versatile tree trimming system that extends for added reach.

**\$45.99**



(7365877)

Power-Lever Lopper is 30", with fully hardened steel blades, will cut 1 3/4" branches.

**\$26.99**

## Ace Garden Rakes

**Steel Leaf Rakes**



(7012867)

The Ace 24-Tine Steel Leaf rake is used for clearing leaves & debris from lawns. Flexible steel tines pull out thatch.

**\$23.99**



(74978)

The Ace 22-tine steel leaf rake is used for pulling out thatch for a healthier lawn. Ideal for large yards and big jobs.

**\$14.99**



**Steel Bow Rakes**



(71752)

16 tine heavy duty welded head. Easy to clean. 9 inch single layer grip. Chrome ferrule with pinned head.

**\$19.99**



(7012818)

The 16 steel tines work hard to break up hard, compacted soil or mulch and spread the material evenly.

**\$22.99**



## BEi®... We Have The Tools You Need

By renting from BEi®, you have access to our extensive line of well-maintained equipment.

### Scissor Lift

An elevating work platform with steel guard rails.

25' .. **\$150** per Day  
**\$400** per Week  
32' .. **\$220** per Day  
**\$480** per Week

Drives easily through most commercial doorways.

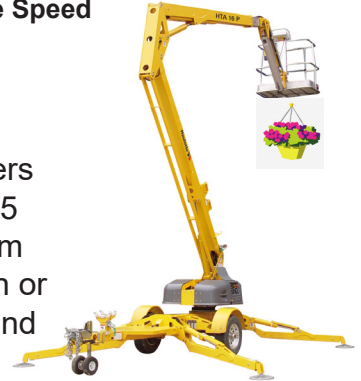


### Towable Boom Lift

More Control · More Rigidity · More Speed

**\$300** per Day  
**\$1000** per Week

Hydraulic auto-leveling outriggers for faster and easier set up. 65 MPH rated tow speed. Platform controls with one-hand operation or boom functions. Standard air and water lines to platform.



### Mini Track Loader Works Big Time In Small Spaces

Available Accessories  
Auger, Trencher  
and Forks.

**\$220**  
per Day  
**\$880**  
per Week



### Power Buggy

**\$70** per 4 Hours  
**\$100** per Day



Easily moves concrete, mud, gravel, dirt and more, over tough job sites. The Power Buggy gets your load where it needs to go.

### Brute Breaker Hammer

The plug-in anywhere hammer that does not need a compressor.

**\$60** per 4 Hours  
**\$75** per Day

Break up concrete and other surfaces for easy disposal.



### Bending Brake

**\$50** per Day  
**\$200** per Week

The Mark I® Series Bending Brake is the only brake on the market able to handle both residential and commercial applications without constant adjustments.



**BEi® Supply and Rental, Inc.**  
**536 E. Highland Road**  
**Macedonia, OH 44056**

**[www.beirental.com](http://www.beirental.com)**  
**Phone (330) 467-2201**

#### Store Hours:

**Mon-Fri 7:00 AM to 5:00 PM**  
**Saturday 8:00 AM to 3:00 PM**

**E-Mail [bei@beisupply.com](mailto:bei@beisupply.com)**

**Fax (330) 467-2205**





Call for a Rental Reservation... (330) 467-2201

[www.beirental.com](http://www.beirental.com)



For jobs that require added reach and lift height - along with more speed and capacity - the Bobcat vertical lift path skid-steer loader with longer wheelbase is the perfect tool.



## Bobcat Skid-Steer Loader

Model	Capacity	Per Day	Per Week
S185	1850 Lbs	<b>\$225</b>	<b>\$900</b>
S66	4800 Lbs	<b>\$275</b>	<b>\$1100</b>

## Multi-Purpose Scaffold Set

Height	Day/Wk	4 Week
6 Feet	<b>\$50</b>	<b>\$100</b>
12 Feet	<b>\$100</b>	<b>\$200</b>



## 5' X 7' Scaffold Sets

Includes Walkboards.

**Low Monthly Rates Available**

Choose from a variety of easy-to-transport, easy to assemble indoor and outdoor units. Great for painting and changing lamps.

Height	Day	Week	4 Week
5 Feet	<b>\$50</b>	<b>\$50</b>	<b>\$100</b>
10 Feet	<b>\$80</b>	<b>\$80</b>	<b>\$160</b>
15 Feet	<b>\$110</b>	<b>\$110</b>	<b>\$225</b>
20 Feet	<b>\$140</b>	<b>\$140</b>	<b>\$280</b>
30 Feet	<b>\$200</b>	<b>\$200</b>	<b>\$400</b>



## Drain Auger 5/8" Easy Rooter

Clear Clogged Drains. Armed with a 5/8" Easy Rooter, you can easily unplug stopped-up drains.

**\$55** per 4 Hours  
**\$75** per Day



## Gas Power Pump 2" Discharge

**\$40** per 4 Hours  
**\$50** per Day

Whether it's in a basement, pool or construction site, you move a lot of water the fast and easy way. Includes a 20' suction hose.

## Magnetic Drill

Lightweight · Maneuverable

**\$52** per 4 Hours  
**\$70** per Day

Used for a variety of jobsite applications, including ferrous plates, shapes and structural support beams.



## Save Money!

Eliminate ownership costs, including maintenance, repair and storage.

BEi®...

## The Best Place for Quality Hardware and Rental Equipment

### Bobcat Excavator

Model	Dig Depth	Per Day	Per Week
E20	8' 5"	<b>\$235</b>	<b>\$940</b>
E35	11' 2"	<b>\$300</b>	<b>\$1200</b>

Highest bucket breakout force in its class. Bobcat's unique multi-function hydraulic feature lets the operator use up to four functions at the same time.



### Bed Edger and Trencher



Designed for bedding operations and for standard trenching this machine will dig sprinkler pipe trenches.

**\$55** per 3 Hours  
**\$95** per Day

### Post Hole Digger



**One Man**  
**\$50** per 4 Hours  
**\$70** per Day  
**Two Man**  
**\$60** per 4 Hours  
**\$90** per Day

Bores holes for deck and fence posts. Also great for planting shrubs and trees.

### Stump Grinder

**\$150** per 4 Hours  
**\$225** per Day



Eliminates unsightly stumps in minutes.

### Trencher

Designed for gas, water, sewer, electric and communication lines.



**4" x 30"**  
**\$140** per 4 Hours  
**\$180** per Day

**6" x 36" · Tracked**  
**\$140** per 4 Hours  
**\$180** per Day

### 14" Power Cutter Cutoff Saw



One of the most portable and fastest ways to cut concrete.

**\$48** per 4 Hours  
**\$65** per Day  
\* \$20.00 Blade Rental.

### Block Buster Paver Saw



**14" Blade**  
**\$55** per 4 Hours  
**\$75** per Day



Cut concrete blocks, pavers or bricks down to size for new patios or porches.

## Get Expert Advice!

Learn how to work like a professional and get the job done fast.

# BEi® Rental... Your Project solutions Place

## Towable Compressor 185 CFM · 100 PSI



### Compressor with Breaker

**\$160** per Day      **\$460** per Week

### Compressor with 2 Breakers

**\$180** per Day      **\$500** per Week

## 6" Chipper

Power and Maneuverability

**\$180** per 4 Hours

**\$250** per Day



Clean up that yard mess in no time!

## Log Splitter



**\$70** per 4 Hours

**\$90** per Day



## Towable Mortar Mixer 8 Cu. Ft. · High Dump Mixer

**\$60** per Day

**\$180** per Week

Delivers fast and thorough blending.



### Concrete Mixer Portable · Electric

**\$28** per 4 Hours

**\$35** per Day

## 20' x 30' Tent Rental



**\$180** per Day  
or Weekend

**\$540** per Week

Do not take chances on the weather cooperating for your outdoor events. A tent will keep your guests shaded and dry.

## Banquet Table and Chairs

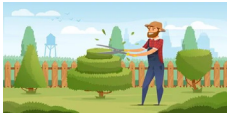


	Week Day	Sat and/ or Sun	Week
CHAIRS	<b>\$1.00</b>	<b>\$1.50</b>	<b>\$3.00</b>
TABLES	<b>\$4.50</b>	<b>\$6.00</b>	<b>\$13.50</b>

It is easy to rent the tools, equipment or supplies  
you need to make your project or party a success.  
Call BEi® for a reservation at (330) 467-2201



## Ace Tree Pruner



The Ace 12-foot compound-action tree pruner is a versatile tool that gives you the combined benefits of a saw and bypass pruner for fast, easy pruning.

**\$38.99**

(72996)

## Water Timer

Keep your lawn healthy and the garden green with a 2-Zone HydroLogic Digital Timer. Water when you want by selecting up to four independent start times on each valve. Manual mode allows you to turn on the water whenever you need it.

**\$45.99**



(7005461)



## Kneeling Pad

The Pad is made from high quality NBR rubber with the perfect thickness for comfort. Due to the toughness of the skin, it is washable and it resists chemical stains. The Pad has a cut-out handle making it easy to carry to the garden, sporting events or wherever you may need that extra comfort to kneel or sit.



(7839202)



**\$9.99**

## Mouse Traps



(7567340)

**\$3.99**



Mouse problems? BEi has you covered! We have your standard mouse traps, JAWZ Pro traps, STICK-EM glue traps and we also carry the VICTOR Electronic Mouse Trap! Stop in today so we can help you with all your pest problems!



(71301)

**\$1.59**



(7567233)

**\$1.99**



(7132756)

**\$22.99**



## Two-Way Radios



(3504313, 3504339, 3504347, 3268513)

Empower your team with a faster way to communicate instantly, without missing a beat. With crisp, clear audio throughout the workplace and exceptional durability. Enhanced audio quality, a rugged design.



**\$274.99, \$224.99, \$244.99, \$194.99**

## Nitrile Gloves

Ammex Gloveworks black nitrile powder free industrial gloves are nearly as elastic as latex, so they conform to your hand to deliver comfort, a great fit and a high level of tactile sensitivity. This glove works for automotive, industrial, janitorial, sanitation, food service and safety applications. They are made from component materials that comply with FDA regulations for food contact.



**\$12.99**

(6204390, 6204408, 6204861, 6382345, 6204416)

**BEi® Supply and Rental, Inc.**

**536 E. Highland Road  
Macedonia, OH 44056**

**[www.beisupply.com](http://www.beisupply.com)**

**Phone (330) 467-2201**

**Store Hours:**

**Mon-Fri 7:00 AM to 5:00 PM**

**Saturday 8:00 AM to 3:00 PM**

**E-Mail [bei@beisupply.com](mailto:bei@beisupply.com)**

**Fax (330) 467-2205**



BEi® Supply and Rental, Inc.  
536 East Highland Road  
Macedonia, Ohio 44056

Presorted  
Standard  
U.S. Postage Paid  
Northfield, OH  
Permit No. 52



\*Check us out on Facebook!\*

\*ALL PRICES MAY BE SUBJECT TO CHANGE WITHOUT NOTICE\*

**Store Hours: Mon-Fri 7:00AM to 5:00PM · Sat 8:00AM to 3:00PM**  
**Phone (330) 467-2201 · Fax (330) 467-2205**  
**[www.beisupply.com](http://www.beisupply.com)**

## Engine Tuneup



11oz.  
(8492829)

B'laster Small Engine Tune-Up is formulated to assist in the preventative maintenance of all two and four-cycle combustion engines. It dissipates moisture and inhibits rust and frees rings and valves, restoring compression, power and vacuum.

**\$5.59**

## TruFuel Premixed Gas & Oil



(7196140)

It is precision-engineered with proprietary lubricants and advanced stabilizers to provide maximum protection to your 2-cycle engines. Our premixed 2-stroke fuel is ethanol-free and formulated for hotter running, higher revving small engines.

32oz. Can



(7196157)

**\$7.29**

**TIME TO GET  
YOUR OUTDOOR  
EQUIPMENT  
READY FOR THE  
SEASON! BEi HAS  
JUST WHAT YOU  
NEED!**



## Bar and Chain Oil



(74133)  
1 Quart

Ace bar and chain oil has a tackiness agent that improves your saws' cutting performance and inhibits rust. Designed for all chainsaws. Use on bar, chain and sprockets.

**\$5.99**

## Midwest Can Plastic Cans 5 Gal

Made of durable HDPE with barrier materials to virtually eliminate hydrocarbon emissions. Wide base and lower center of gravity reduces the chance of a can tipping over. Holds 5 gallons of your gas, diesel or kerosene.

**\$22.99**



(7797590)



(7797665)



(7798879)